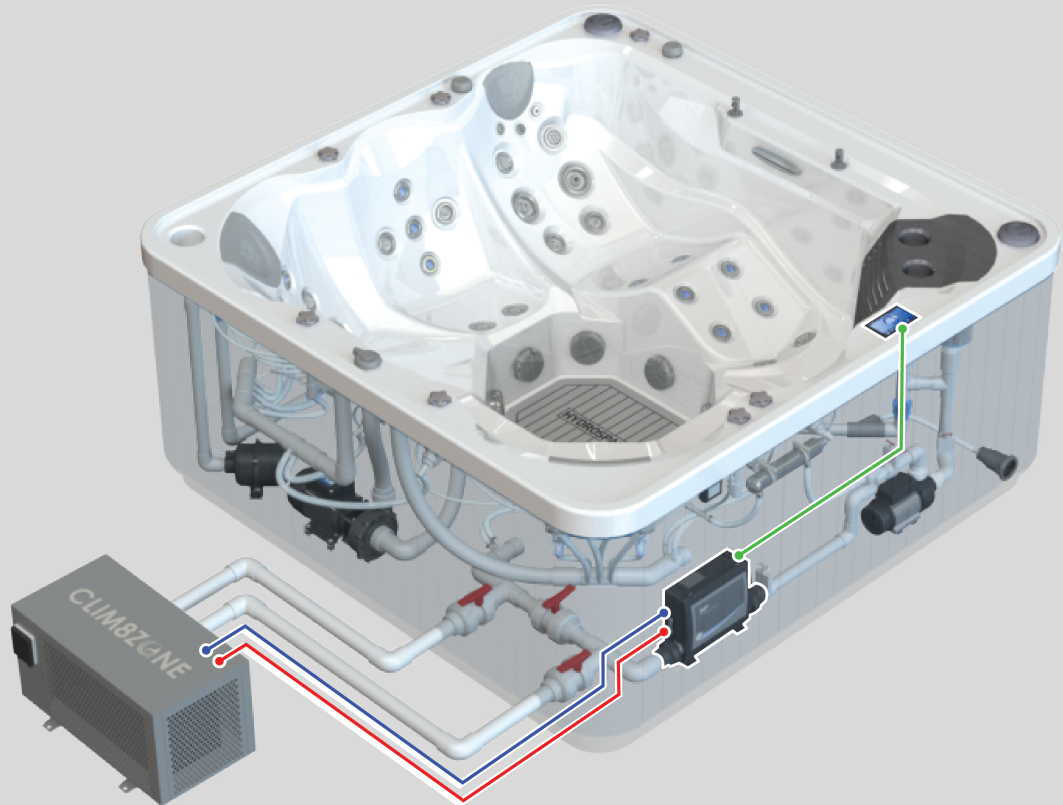


Air Sourced Heat Pumps for Hot Tubs

Buyers Guide - 2022

Save up to 75% on your Hot Tub energy bills



Non Integrated Heat Pumps. These units work independently of the Hot Tubs own control system

Hydro-Pro Options

The user controls and sets the required temperature from the control interface on the Heat Pump.

(Note. You will have to turn your spa's temperature setting down from the Spa topside in order to prevent it from trying to heat up using the electric heater)

These are a great choice if your spa control system is not up to date enough for the Integrated option.

Fully Integrated Heat Pumps. These units work seamlessly with the Hot Tub's control system.

Gecko & Balboa options

Fully integrated into the spa's control system. These units work in tandem with all of the spas components and are operated via the spa's main topside.

This allows use of the Spas electric heater as a supplementary option when required. A great option for newer spas, easy and convenient to use as the heat pump is controlled from the main key pad or Phone app. No need to disconnect electric heater.



What is an Air Sourced Heat Pump?

Air Sourced Heat Pumps for Hot Tubs are an energy efficient alternative to the traditional electric heating systems. They work like a fridge but in reverse, absorbing heat from the outside air and transferring it to the water inside of the tub.

How do Air Sourced Heat pumps work?

Air sourced heat pumps absorb heat from the outside air and boost it to a higher temperature using a compressor. It then transfers the heat to the water in your hot tub.

Some units can get heat from the air even when the temperature is as low as -20° C.



Advantages of using an Air Source Heat Pump?



- Low carbon footprint
- Save money on energy bills
- Even works in lower temperatures (model dependant).
- Easy installation process
- Low maintenance
- Long lifespan

Disadvantages of using an Air Source Heat Pump?



One of the main disadvantages is the initial cost, they are not cheap pieces of kit. However in most cases they will easily pay for themselves within 18 months to 2 years

- They can be noisy
- Often not as efficient at very low temperatures (particularly the cheaper units)

Are all Air Source Heat Pumps the same?

Due to the nature of how an Air Sourced heat pump works, they have different efficiencies at different temperatures. For example, many units are not rated for working under zero degrees C. You will find that units at the cheaper end of the heat pump range will consume more power when working at a lower air temperatures and they will also have a lower heating output. Basically, some units don't work as well in the cold.



What is an INVERTER motor.

If a motor is inverted, this means that it can control how fast or slow it runs, a fully inverted motor can run at anywhere between 1% and 100% of speed. A fully inverted motor is much more efficient & will save you money. If your motor is not inverted, it will only have set speeds. Eg. slow, medium and fast and therefore sometimes it will not be running at the most efficient speed.





Hydro-Pro Heat Pumps Non Integrated

Non Integrated Heat Pumps are the best option for older hot tubs where the spa control system is not modern enough to be fully integrated with a Heat pump of the same brand. These Heat Pumps have their own control interface where the user can set and control the spa water temperature.
Note: You will either have to disconnect the spa's electric heater or turn the temperature setting down on your spa's main key pad in order to disengage the electric heater

We have two types of Non Integrated Heat Pump for you to choose from. Standard - On / Off or Full Inverter options.

Should you wish to completely upgrade your spa's control system to allow the use of a fully integrated Heat pump then please see our integrated heat pumps and upgrade sections below

Hydro-Pro - Standard Series

Works down to -5°C

A great Non integrated heat pump at a great price, with all round great specification makes this a perfect companion for your Hot Tub. Comparable to the Gecko In.Temp in terms of performance.

- Easy temperature control with LCD display
- High efficiency, COP up to 6.4
- 2 year warranty for heat pump, 7 year warranty for compressor and heat exchanger



SKU	Product name	Input Power	Current Rating	Connection	RRP (Ex. VAT)
HTP-8897	Heat Pump - Hydro-Pro 6.0kW	0.97	4.5	50mm	£1502.28
HTP-8898	Heat Pump - Hydro-Pro 8.0kW	1.32	5.9	50mm	£1839.24
HTP-8899	Heat Pump - Hydro-Pro 14.0kW	2.17	9.9	50mm	£2541.24

Hydro-Pro - Inverter Series

Works down to -20°C

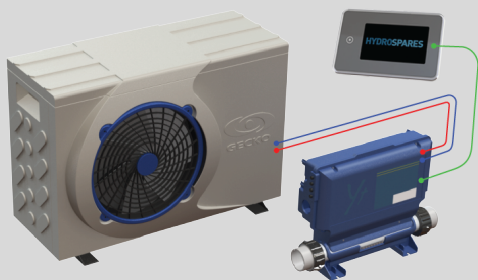
The Inverter heat pump offers the ability to vary the heating capacity to suit the weather conditions. Using clever automated modes, the compressor and the fan speeds will be varied to reduce noise level and energy consumption by up to 50%. Energy label A

- High efficiency, COP up to 13
- Soft start, no voltage peaks
- 2 year warranty for heat pump, 7 year warranty for compressor and heat exchanger
- Wi-fi module included



SKU	Product name	Variant	RRP
HTP-7918	Heat Pump - Hydro-Pro Inverter	PX7/32	£2035.8
HTP-8747	Heat Pump - Hydro-Pro Inverter	PX11/32	£2962.44
HTP-8754	Heat Pump - Hydro-Pro Inverter	PX14/32	£3243.24

Gecko Heat Pumps Integrated



Integrated Heat Pumps are the best option for newer hot tubs & where the user wants the convenience of operating everything via the Spa topside.
The integrated Heat Pump has none of it's own controls and works seamlessly with your Hot Tub's own Spa pack (Control System). The user has full control of the heating via the hot tub's main topside.

These systems will usually include various 'smart' features allowing for an enhanced user experience, you can also take advantage of the Spas on-board electric heater when a faster heat up time is required or it becomes more economical, making it a flexible and power efficient setup.

Note: Your spa pack must be a Gecko one and must be up to date enough (see below), if not you can always upgrade to the latest Spa pack (see the upgrades section below) .



Gecko IN.TEMP Series

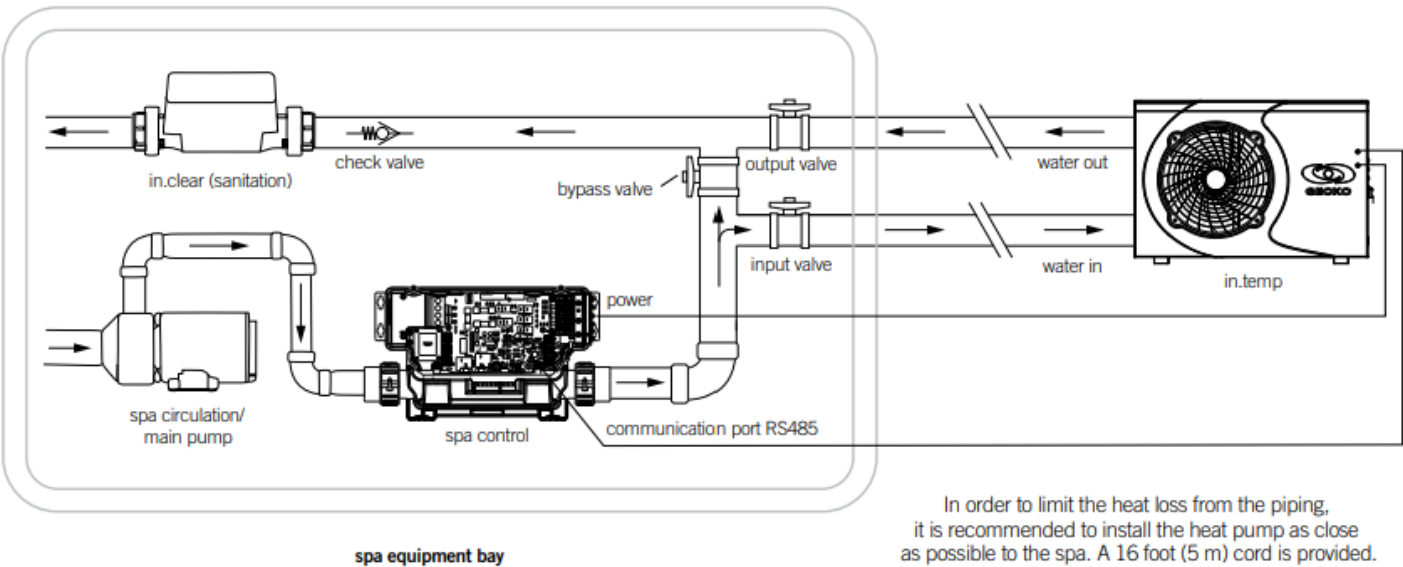
Works down to -5°C

Controlled via your Hot tub control system, using the topside on your tub, Works with all IN.Y spa packs. (providing it they have the inbuilt RS485 port and up to date software) - If you're unsure please contact us for help 01326 371488



See our option below if you need to update your spa pack.

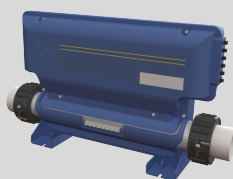
SKU	Model	Power	Current Rating	Sound	RRP
8824	in.temp-H5.0-CE	1.2	3.9	26	£1862.14
8825	in.temp-H7.5-CE	1.91	5.49	-	£2198.7



In order to limit the heat loss from the piping, it is recommended to install the heat pump as close as possible to the spa. A 16 foot (5 m) cord is provided.

Need to upgrade your tub to accommodate a Gecko In.Temp Heat Pump ?

See compatible spa packs and topsides. Get fully integrated.



Gecko IN.TEMP Heat Pump - 5kW

Works with IN.Y Series Spa Packs



SKU	Product name	Power	Current Rating	Sound	RRP
8824	Heatpump - IN.TEMP Heat Pump - 5kW	1.2	3.9	26	£1862.14
8825	Heatpump - IN.TEMP Heat Pump - 7.5kW	1.91	5.49	-	£2198.7

Gecko AeWare Spa Pack - in.ye-5

5 outputs

- Configurable to Various Requirements
- Supports 1, 2 and 3 phase input power
- 3.0kW Heater



SKU	Product name	RRP
6995	Spa Pack - IN.YE-5	£539.03
7812	Spa Pack - IN.YT-7	£720.77

Gecko Topside Control Panels

Touch Screen



- Full Featured Touch Screen
- Multi Function
- No Buttons

SKU	Product name	Variant	RRP
TOP-7468	IN.K1000	(Touch Screen)	£429.55
TOP-8165	IN.K1001	(Touch Screen)	£359.63

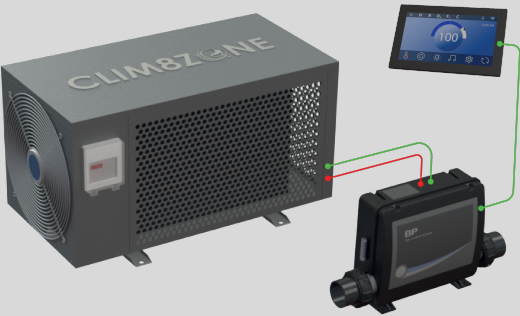
Gecko Topside Control Panel

7 or 10 Button



- Full colour display
- 7 Button or 10 Button
- 2 Pump or 3 Pump

SKU	Product name	Variant	RRP
TOP-7469	IN.K800	10 Button	£373.72
TOP-7471	IN.K500	7 Button	£242.24



Balboa CLIM8ZONE Heat Pump
Heats & Cools Spa Water

Integrated Heat Pumps are the best option for newer hot tubs & where the user wants the convenience of operating everything via the Spa topside. The integrated Heat Pump has none of its own controls and works seamlessly with your Hot Tub's own Spa pack (control System). The user has full control of the heating via the hot tub's main topside.

These systems will usually include various 'smart' features allowing for an enhanced user experience, you can also take advantage of the on-board electric heater when a faster heat up is required or it becomes more economical, making it a flexible and power efficient setup.

Note your spa pack must be a Balboa BP pack and must be up to date enough (see below), if not you can always upgrade to the latest pack (see the upgrades section below) you may only need to upgrade the spa pack.



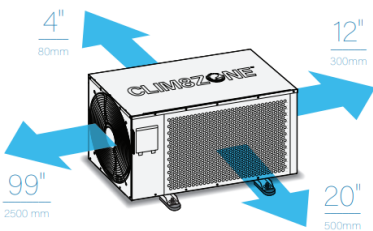
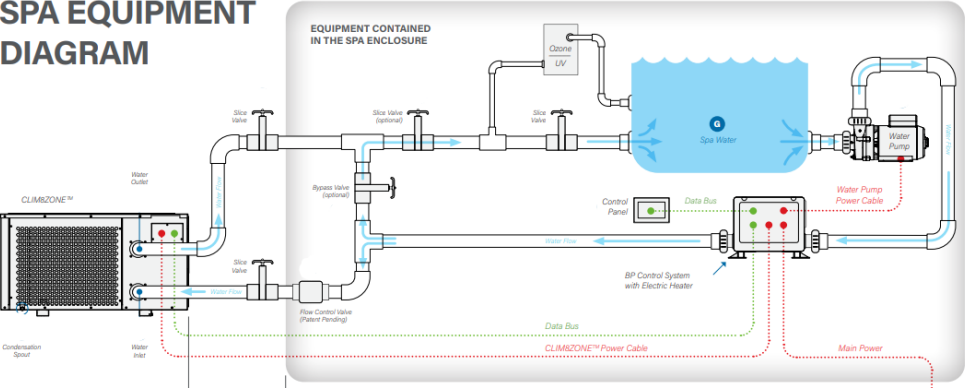
Balboa CLIM8ZONE Heat Pump
Works down to -20°C



Controlled via your Hot tubs control system, using the topside on your tub, The CLIM8ZONE TM unit is compatible with BP Control Systems that have one of the following agency prefixes: BP20, BP21, BP501, BP6, BP2, BP1. The agency prefix is noted on the control system identification label. See our option below if you need to update your spa pack

SKU	Product name	Variant 1	RRP
HTP-8511	Balboa CLIM8ZONE Heat pump	2" unions	£2024

**SPA EQUIPMENT
DIAGRAM**



Need to upgrade your Hot Tub to accommodate a Balboa Clim8zone Heat Pump?
See compatible spa packs and topsides. Get fully integrated.



Balboa CLIM8ZONE Heat Pump
Heats & Cools Spa Water

Click title above or search website for full info



SKU	Product name	Variant 1	RRP
HTP-8511	Balboa CLIM8ZONE Heat pump	2" unions	£2024

Balboa Spa Pack - BP Series
Uptodate firmware for use with Clim8zone

Click title above to see all BP spa packs available



SKU	Product name	RRP
5349	Spa Pack - BP2100G1	£841.65
5592	Spa Pack - BP6013G1	£685.38

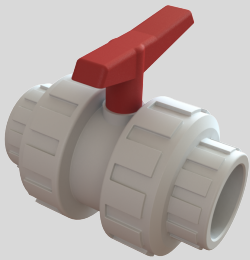
Balboa Topside Control Panels
More TP & Spa Touch options available - see website



SKU	Product name	RRP
TOP-5372	Topside Control Panel - TP600	£158.99
TOP-9334	Topside Control Panel - TP700	£277.93
TOP-9552	Topside Control Panel - SpaTouch3	£453.37
TOP-10426	Topside Control Panel - TP500	£114.45

Accessories

Useful items to help install your new Heat Pump



HS PRO - Heat Pump Install Kit

Includes 1.5" Semi-Rigid Pipe

A basic installation kit which includes the common essentials to connect your new Heat pump to the Hot Tub. Other items may be necessary depending on spa specifics.

- 8 x Elbows
- 4 x Couplers
- WDF-05 Blue Glue
- 4 x Pipe Clips
- 6m Semi-Rigid Pipe 1.5" (Supplied in 1m Lengths)



We recommend using this in conjunction with our Bypass Kit - see BYP-6051

SKU	Product name	RRP
HEA-6045	HS Pro - Basic Heat Pump Install kit 1.5"	£88.99

HS Pro Heat Pump Bypass kit

2.0"

Bypass Kit for Hot Tub Heat Pumps, allows the heat pump to be isolated/bypassed for maintenance purposes and also allows adjustment of flow rate through the Heat Pump for optimal performance.
Not Glued allowing for different configurations



Includes,
2 x Reducing bushes for 1.5" conections
2 x Adaptors for 50mm conections

SKU	Product name	RRP
BYP-6051	HS Pro Bypass kit - 2.0" (for Hot Tub heat pump instal)	£67.81

Griffon WDF-05 Solvent Cement Glue

PVC/ABS Compatible

SKU	Variant	RRP
4799	500ml	£25.85
5200	250ml	£13.15





Semi-Rigid PVC Pipe - White
Straight - 1m Lengths

SKU	Pipe Size	RRP
6518	2"	£9.45
6519	1-1/2"	£6.6



Semi-Rigid PVC Pipe - White
Sold Per Meter - Max 15m

SKU	Pipe Size	RRP
3774M	1-1/2"	£8.25
3775M	2"	£10.6



Ball Valve - Double Union
White PVC

SKU	Product name	RRP
VAL-7193	Ball Valve (IMP) Double Union - 1.5"	£25.34
VAL-7194	Ball Valve (IMP) Double Union - 2.0"	£36.17



Ball Valve - No Unions
White PVC

SKU	Product name	RRP
VAL-8651	Ball Valve (IMP) - 1.5"	£20
VAL-8652	Ball Valve (IMP) - 2.0"	£22.27

Equal Elbows 90°
White PVC



SKU	Product name	RRP
ELB-2002	Elbow - 90° Equal > IMP - 1.5"	£3.33
ELB-2003	Elbow - 90° Equal > IMP - 2.0"	£4.9

Equal Elbow 45°
White PVC



SKU	Product name	RRP
ELB-2026	Elbow - 45° Equal > IMP	£4.42
ELB-2027	Elbow - 45° Equal > IMP	£5.87

Equal Couplers
White PVC



SKU	Product name	RRP
CPL-2042	Coupler - Equal > IMP - 1.5"	£2.36
CPL-2043	Coupler - Equal > IMP - 2.0"	£3.03

Equal Tee
White PVC



SKU	Product name	RRP
TEE-1965	Tee - Equal > IMP - 1.5"	£4.3
TEE-1966	Tee - Equal > IMP - 2.0"	£6.84

Pipe Clips
White ABS



SKU	Product name	RRP
PIP-7172/1	Pipe Clip IMP - 1.5"	£1.48
PIP-7191/1	Pipe Clip IMP - 2.0"	£1.68

2" x 1 1/2" Reducing Bush - PVC - White
Spigot x Socket



SKU	Product name	RRP
RED-2099	Reducer - Insert/Flush > IMP	£1.75